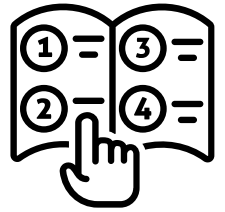




bulcan



USER MANUAL ALL DEVICES

Compatibility

The Bulcan Smart System version offers data to all devices with EBIKE fields.

Your device

Below we will show you an example of pairing.
You'll need to refer to your device's instructions for all the instructions on how to pair with sensors.

STEP 1

Turn on your electric bike.

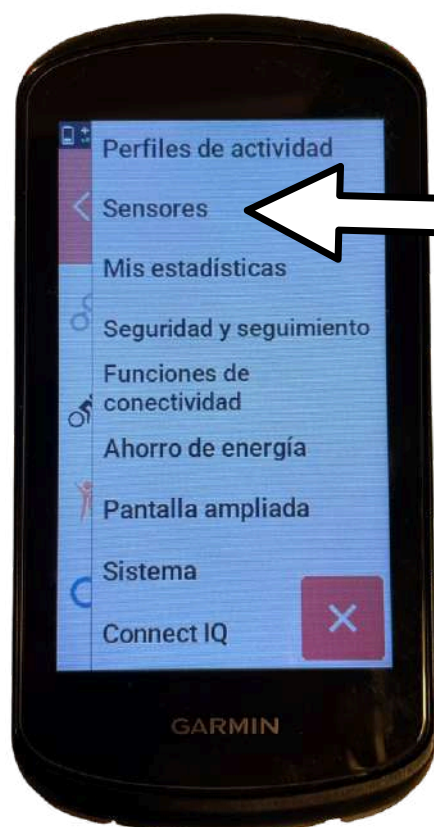
Turn on the electric bike with the Bulcan installed correctly, according to the Bulcan Installation Guide.



STEP 2

Matchmaking 1.

According to your device's instructions, search for sensors.

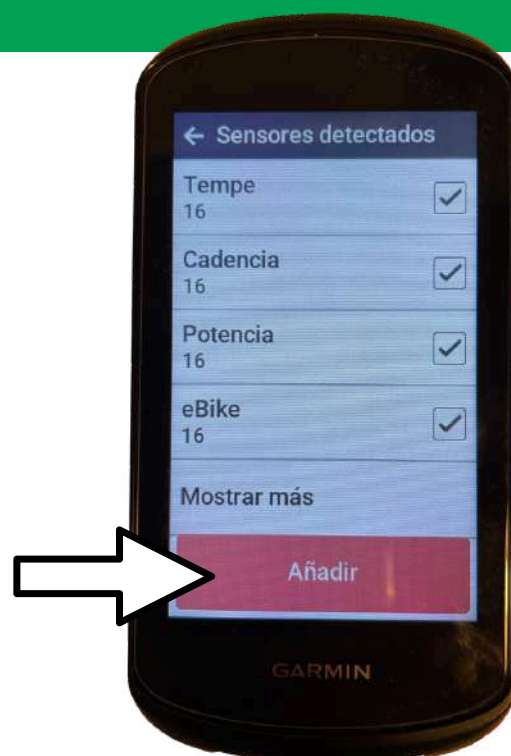


by lab.bike

STEP 3

Matchmaking 2.

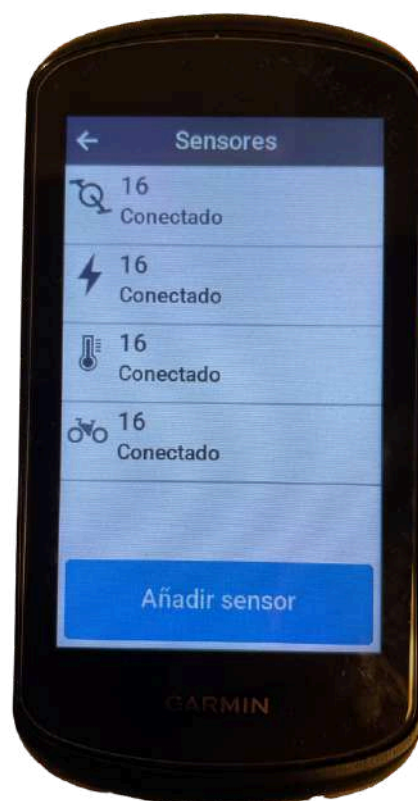
Select the sensors you want to connect to.



STEP 4

Connected!.

From this moment on, your device will be connected to the selected sensors, and they will be displayed according to your device's instructions.



by lab.bike

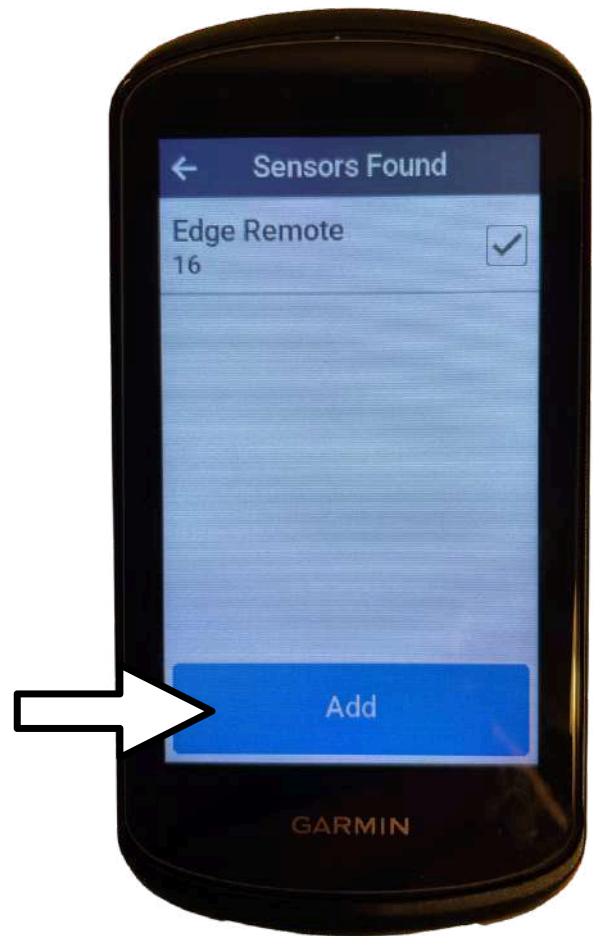
STEP 5

Pairing remote control on Garmin:

IMPORTANT: Before pairing the remote control, it is necessary to pair the Ebike sensor described in the previous steps.

To install the page turning remote on Garmin, simply search for the EDGE REMOTE sensor and add it.

From that moment on, the ebike's "select" button will act as a page forward button on compatible Garmin devices.



Data sent by Bulcan:

Assistance mode:

The assistance mode is sent by the Ebike sensor, it is always displayed on a scale of 7 values:

Off -> Level 0 Eco -> Level 1 Tour -> Level 3 eMTB -> Level 5 Turbo -> Level 7

Speed:

Ebike speed.

Km:

Total km of the ebike.

Remaining km (range):

estimate of the km you can travel based on the remaining battery and the selected mode (Range).



by lab.bike

Remaining battery:

Remaining battery percentage.

Assistance:

Percentage of power being delivered by the cyclist and the engine.

Important: Since Garmin does not have a specific field for assistance percentage, it will be displayed in the "balance" field, with the left leg providing the percentage provided by the cyclist and the right leg providing the percentage provided by the motor.

Battery voltage:

This field cannot be added to a device screen; it appears in the "sensor details" section.

Power:

Power in kW, extracted from the engine power sensor.

Cadence:

Cadence.

It can be extracted from the Power sensor (recommended), in case your device does not have a power sensor, we can extract it from the cadence sensor.



bulcan

by lab.bike

Engine temperature:

Bulcan sends the temperature from both its EBIKE sensor and its TEMPERATURE sensor.

Engine temperature from EBIKE sensor:

Engine temperature, displayed as follows:

Cold | Cold/Warm | Warm | Warm/Hot | Hot

Engine/battery temperature from TEMPERATURE sensor:

Since there are no engine temperature fields on the cycle computers, the temperature data from the temperature sensor will be displayed in the maximum/minimum temperature fields once the Bulcan temperature sensor is selected.

Maximum temperature of the last 24 hours: Engine temperature.

